

DRIVERS, START YOUR ENGINES! FORMULA 1 KICKS OFF 2020 WITH THE AUSTRALIAN GRAND PRIX!

FORMULA 1 ROLEX
**AUSTRALIAN
GRAND PRIX**
2020

from \$1895pp*
Double-share, land only (flights additional)



FORMULA 1 ROLEX AUSTRALIAN GRAND PRIX

5-day/4-night PACKAGE INCLUSIONS

12-15 MARCH 2020

ALBERT PARK CIRCUIT, MELBOURNE

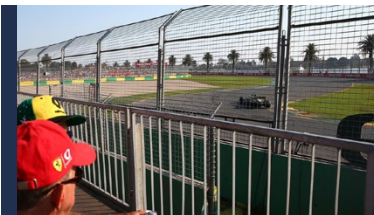
- 4-nights Accommodation (12-16 March 2020)
- 4-Day Grandstand Ticket to the *Formula 1 Australian Grand Prix* at Albert Park
Choice of Schumacher, Waite or Clark Grandstands
- Williment Travel Welcome Function
Hosted by Williment, inclusive of drinks and canapés
- Williment Travel Merchandise
- Support of Williment Staff Ground Assistance during the weekend *(Subject to minimum numbers)*

OPTIONAL EXTRAS

- Flights to Melbourne
- Airport transfers
- Upgrade to alternative Grandstand area
Contact our Sports team for options and pricing
- Extend your stay in Australia

GRANDSTAND OPTIONS

As part of our standard package, please select reserved seating from the Clark, Schumacher or Waite grandstand options.



Clark Grandstand *Standard Package Inclusion*

From the Melbourne skyline to the palm tree studded view, enjoy a premium experience with a reserved seat at the Clark Grandstand. At this location of the circuit, the drivers brake hard from high speed and hook the car into the Turn 9 chicane before cracking open the throttle for the sweeping Turn 10.

Your event ticket includes free transport on Melbourne's tram (Friday-Sunday).



Schumacher Grandstand *Standard Package Inclusion*

Located between the final two turns, the Schumacher Grandstand offers a views of drivers braking into Turn 15, before they accelerate and line up the all-important run into the final corner. With entry to Pit Lane directly ahead of your reserved seat and a superscreen showing all the action, this is a superb spot to witness the racing.

Your event ticket includes free transport on Melbourne's tram (Friday-Sunday).

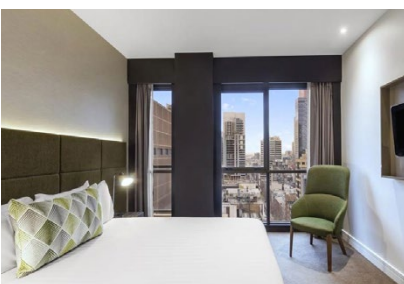


Waite Grandstand *Standard Package Inclusion*

Inspired by the first *Australian Grand Prix* winner, Arthur Waite (1928) this grandstand showcases the corners that F1 cars are made for, with fast switchback between Turns 11 and 12. Opposite the Waite Grandstand from your reserved seat is a superscreen showing the action in real-time so you won't miss a moment of the action.

Your event ticket includes free transport on Melbourne's tram (Friday-Sunday).

HOTEL

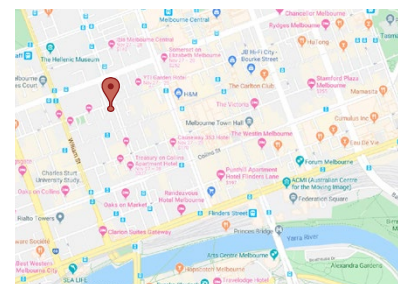


Adina Apartment Hotel ★★★★★

Located in the heart of Melbourne's CBD, the Adina hotel enjoys wonderful proximity to the best shopping and dining the city has to offer.

On-site facilities include a lap pool, fitness centre and restaurant & bar.

Access the racetrack at Albert Park via the #96 tram which is a 2-minute walk from the hotel.





Circuit map is provided as a guide only to approximate locations of proposed seating, viewing areas and facilities around the Formula 1 Australian Grand Prix and is not drawn to scale. The organiser reserves the right to determine actual and final location of seating, viewing areas and other facilities, however patrons will be notified of major changes to their reserved seating arrangements.

OPTIONAL UPGRADES

You may upgrade to alternative Grandstands at an additional cost. We can recommend the following options:



Fangio Grandstand *Upgrade Option*

Overlooking the start/finish line, enjoy the rush of the race start at the Fangio grandstand. With your reserved seat opposite Pit Lane, witness the pit crews in action and post-race celebrations from your prime view of the podium.

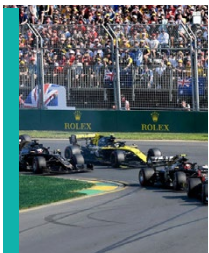
Additional from \$150 pp (4-day pass)



Prost Grandstand *Upgrade Option*

Looking down on the apex of Turn 16, the Prost grandstand offers views of Turn 15, Pit Lane entry and the blast onto the Main Straight. Your reserved seat is opposite the superscreen so you won't miss a moment of racing.

Additional from \$150 pp (4-day pass)



Jones Grandstand *Upgrade Option*

The popular Jones grandstand is located at Turn 1, by the first chicane giving you sensational close-up viewing at Turns 1 and 2. Your reserved seat is opposite the superscreen so you won't miss a moment of racing.

Additional from \$150 pp (4-day pass)



Brabham Grandstand *Upgrade Option*

On the inside of Turn 1, the Brabham grandstand shows cars braking on the limit at the end of the Main Straight and throttle through Turn 2. Your reserved seat is opposite the superscreen so you won't miss a moment of racing.

Additional from \$250 pp (4-day pass)

Please note, there are limited grandstands that offer covered seating as well as a range of corporate options. Contact the Williment Sports team to advise on the best option for you and provide detailed information and pricing.

PACKAGE PRICE

2020 Formula 1 Australian Grand Prix Land Package
staying at the *Adina Apartment Hotel*

TWIN-SHARE/DOUBLE ROOM

SINGLE ROOM

\$1895* pp

\$2845 pp

*Pricing based on two people sharing.



WEEKEND ITINERARY

Thursday 12 March

Check in at the *Adina Apartment Hotel*, for a 4-night stay.

Please note, if you arrive to Melbourne in the morning, your hotel room may not be available until early afternoon – the hotel will be happy to store your luggage until check in time.

This evening, join other Williment travellers on our *Australian Grand Prix* package for welcome drinks in the hotel bar.

Friday 13 March

Head to Albert Park at your leisure making use of the trams (free use with your event ticket). Over the next three days enjoy the best of Formula 1 racing, plus practice sessions, displays, demonstrations and parades throughout the day.

Saturday 14 March

Make your way to the Albert Park circuit at your leisure utilising the trams for more racing action.

Sunday 15 March

Make your way to the Albert Park circuit for the *Formula 1 Australian Grand Prix* warm-up followed by a parade of the Formula 1 drivers.

At 5.00pm the *2020 Formula 1 Australian Grand Prix* commences with a race duration of approximately 1 hour and 40 minutes.

Monday 16 March

This morning, check out of your room and make your way to Melbourne Airport in good time for your return flight home.

ABOUT MELBOURNE

With Melbourne's combination of world-class dining, impressive international and local art galleries, homegrown fashion and a packed sports calendar, it's no surprise Victoria's capital is regarded the world's most livable city. Discover hidden laneways and rooftops, dine at culinary hotspots. or head into hipster suburbs such as Carlton, Fitzroy or St Kilda.

BOOKING CONDITIONS

Package prices are quoted per person in New Zealand dollars and are subject to availability at the time of booking. • A non-refundable deposit of \$500 per person plus any upgrade costs is required on confirmation of booking. • Booking cannot be guaranteed without a deposit. • Full non-refundable balance of payment is required no later than Friday 13 December. • All cancellations must be received in writing. • Williment Travel reserves the right to amend package prices without warning due to currency fluctuations. • We strongly recommend travel insurance for the duration of your visit to Australia. • Travel documents will be dispatched approximately 10 days prior to travel. • Full details will be provided in travel documentation. • For further confirmation please contact our Sports team: 0800 000 045 or sports@williment.co.nz.



BOOK NOW

0800 000 045

sports@williment.co.nz

www.williment.co.nz